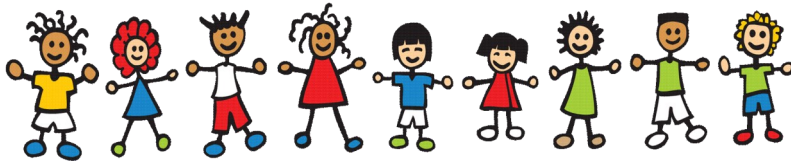




**CHILDREN SYSTEM OF CARE**  
**(209) 381-6800**

# CHILDREN SYSTEM OF CARE



**CONNECT AND COMMUNICATE**  
**COMMUNICATE AND CONNECT**

Children's System of Care  
Betty Hoskins, Program Manager

Phone: 209-381-6800

Fax: 209-725-3883

Email: [bhoskins@co.merced.ca.us](mailto:bhoskins@co.merced.ca.us)



Merced County Mental Health  
480 E. 13th Street, Building 2  
Merced, CA 95341

After 5:00 pm and on weekends call:  
Toll Free 1-888-334-0163

## How to link with Mental Health Services:

---

### POE (Point of Entry) Appointments

- For Merced, Atwater, Los Baños, and the greater Westside area call (209) 381-6800. For Livingston, Delhi and the North side area, call (209) 394-4032. Ask to schedule an appointment for an assessment.

*Social Workers/Probation Officers: Authorization to treat dependents of the court must be approved by the legal guardian. Foster parents and Foster Family Agency social workers do not qualify as the legal guardian.*

### CSU (Crisis Stabilization Unit)

- For crisis walk-ins, go to the CSU. The CSU is open 24 hours a day, seven days a week. The CSU is located within the Marie Green Psychiatric Facility at 300 East 15th Street in Merced. Use the south side entrance. For more information call (209) 381-6819.

### ES (Emergency Services)

- For emergency situations, call 911. Law enforcement will assess the situation and transport the individual to the CSU, if indicated.

### Crisis Warm Line

- For personal crisis calls, contact (209) 381-6800. The Warm Line is available 24 hours a day, seven days a week.

# CHAT



## Child Abuse Treatment Program

Treatment and services to child victims of violence, abuse, neglect, domestic violence, and maltreatment such as bullying.

- Assist in referring eligible children to Victim Witness compensation services.

Provide help and support during court proceedings.

- No cost.

Contact the Human Services Agency, Youth Center, at (209) 385-7590

## THE CUBE

### Transition Age Youth 16 to 25



Community  
United  
By  
Empowerment

Youth in leadership.  
Serving and inspiring youth.

Youth ages 16 to 25 emancipating from foster care and/or service agencies.

#### The CUBE

- Fostering independence and self-sufficiency.
- A welcoming, fun, safe space and place for youth.
- Explore Discovery Recovery Practice Learn
- Mental Health Services
- Open 10:00 to 5:00, Monday to Friday.
- No cost
- Contact The CUBE at (209) 381-6800.

#### Vocational Rehabilitation Counseling:

- Career Guidance
- Self-assessments
- Job Readiness Skills
- Linkage and Referrals

## How to link with Mental Health Services:

#### On-site Clinician at Child Welfare

- For assessment, linkage and services, contact the on-site Aspiranet Mental Health Clinician, at 726-3090.

#### SOS Committee (Supportive on Going Services)

- SOS is an interagency problem-solving committee. Mental Health is represented at SOS. The Family Resource Council is located at 1573 Main Street in Merced. SOS meets every Wednesday at 8:30 AM. Contact The Family Resource Council at (209)381-5980 to schedule an appointment. The referring party is responsible for notifying partners involved with the family of the appointment.

*Social Workers: SOS approves ITFC placements.*

#### Placement Council

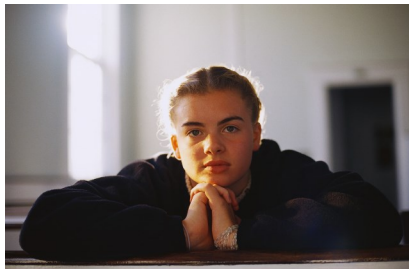
- The Placement Council is an administrative interagency committee that reviews requests for group home placements as well as access to interagency specialty programs; i.e., DoWith, WeCan. Mental Health is represented at the Council. The Placement Council meets on Tuesdays at 8:30 AM at the Probation Department. Call Probation at (209) 385-7495 to schedule a case presentation.

## Specialty Services

---

### Therapeutic Behavioral Services (TBS)

- Intense short-term interventions focusing on specific behavior that is jeopardizing placement.
- Ages 0 to 21.
- Must have previous hospitalization (s), group home placement, or at risk of a group home placement.
- Full Scope Medi-Cal and receiving Mental Health Services.
- Referral contact for foster youth: On-site Child Welfare Clinician at (209) 726-3090.
- Referral contact for youth in general: Children's System of Care Program Manager at (209) 381-6800.
- Contact for open TBS cases: Aspiranet TBS Head of Service at (209) 726-3090.
- Contact for open TBS cases after business hours: (209) 620-3319.



### WeCan

- Full service partnership program offering 24-hour availability in the home. Intensive home based services for the family, with the family, driven by the family.
- Ages 0 to 21.
- Child Welfare involvement; i.e., foster care or at risk of foster care.
- Funded by MHSA and Medi-Cal
- Referral contact for foster youth: On-site Child Welfare Clinician at (209) 726-3090.
- Referral contact for youth in general: Children's System of Care Program Manager at (209) 381-6800.
- Contact for open WeCan cases during business hours: Aspiranet WeCan Head of Service at (209) 726-3090.
- Contact for open WeCan cases after business hours: (209) 620-3319.

### DoWith

- Wraparound services for the family, with the family, driven by the family. Services available 24/7.
- Ages 0 to 21.
- High Level (RCL 10 and above) alternative to Child Welfare or Probation Placements.
- Must make a case presentation to the Placement Council for enrollment. Call Probation at (209) 385-7495 to schedule a case presentation.
- Contact for open DoWith cases during business hours: Aspiranet DoWith Program Manager at (209) 725-2125.
- Contact for open DoWith cases after business hours: (209)756-5443.